

Seth Thompson

Hist 355

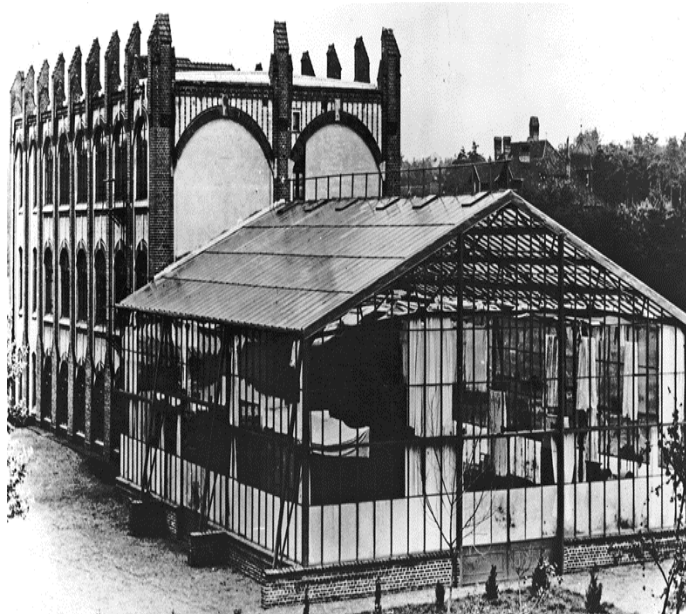
2/15/2022

Babelsberg Studios



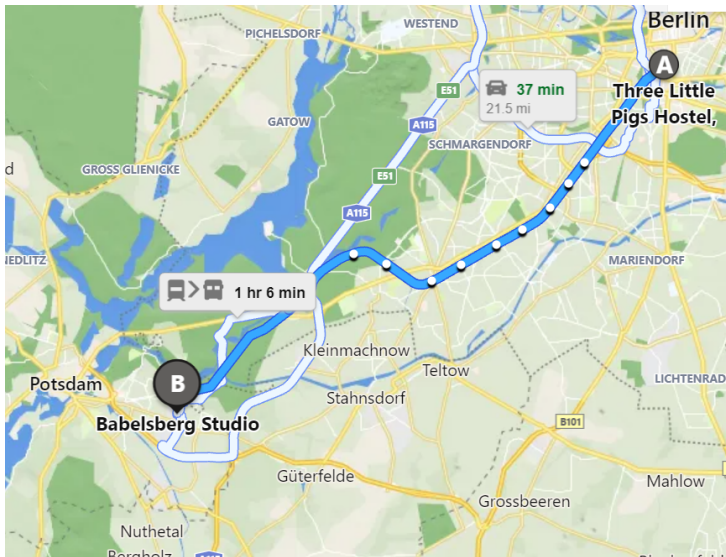
Babelsberg Studio is the world's oldest continuously operating film studio. Averaging close to 100 films per year, it is also one of the most prolific. It has the unique distinction of being home to and the starting point of many influential and renowned filmmakers and actors. Decades of distinguished filmmaking have led to Babelsberg being the home of several innovations in film, cinematography, and especially set design

The studio originally began as a glasshouse studio (a set that uses natural light for filming) for the filming of *Dance of Death* in 1912. The studio would eventually expand into a more modern form with the filming of *Metropolis*, as the film required so much extra space for its detailed sets. Under Nazi control, the studio cranked out over 1000 films, most of which were tightly controlled propaganda films to support or distract from the war effort.





Babelsberg's influence runs deep. Alfred Hitchcock, perhaps the most important director of the 20th century, said "Everything I had to know about filmmaking I learned in Babelsberg." Babelsberg is also known for being the site where the "unchained camera" was invented. The unchained camera is simply a camera that is in motion during a shot – a technique that is now ubiquitous and present in virtually all modern films. The studio's location in Germany and the quality / quantity of movies that came out of the studio in the early 1900's helped make German Expressionism a globally recognized style across many mediums.



The studio is located about 45-60 minutes away from the Three Little Pigs Hostel. The studio is actually in Potsdam, just outside of Berlin. Public transit may be slower, but the ride to the location should not take more than about an hour.